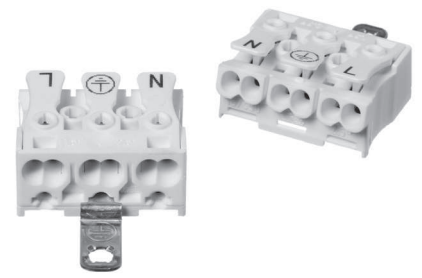


# LUMINAIRES CONNECTORS

## LK 980



### Mains Connectors for Luminaires with Clamping Spring Terminals, 3way

Approvals								
Nominal Cross Section mm <sup>2</sup>	2,5		2,5		20-14 AWG 16 amp.			
Voltage Rating V	450		450		600			

Terminal blocks with screwless terminals for solid wires

#### Screw Fixing

Fixing of connectors by screw or rivet size Ø 2.9 / 3.0 mm into 2 fixing holes.

#### Catch Pin Fixing (RZ)

There are 2 moulded catch pins on the bottom of the connector. Fixing is made by simply pushing them into holes of size Ø 3.5 mm. For plates of 0.475 - 1.2 mm thickness.

#### Release Conductors

External contacts by release key, internal contacts by release tool, WKZ 980-01.

#### Internal Earth Connectors

„SU“ - “push-in” earthing claw under the connector (for connectors with catch pin fixing only)

„SK“ - screw fixing outside / in front of the connector

„ST“ - push-in fixing outside / in front of the connector

#### Marking (Option)

Non-abrasive printing according to EN 60 335:

N ⊕ L - other printing upon request.

#### Strain Reliefs

ZEL 980 see page 18 / ZEL 100 see page 30.

#### Test Adapter

Adapter for final inspection of luminaires - upon request.

#### Technical Data

Mouldings: Polyamide 6/6, white  
Continuous working temp.: 100° C  
Short-time temperature: 160° C  
Glow wire test - EN 60 598: 960° C

Busbars: Electro copper, plated

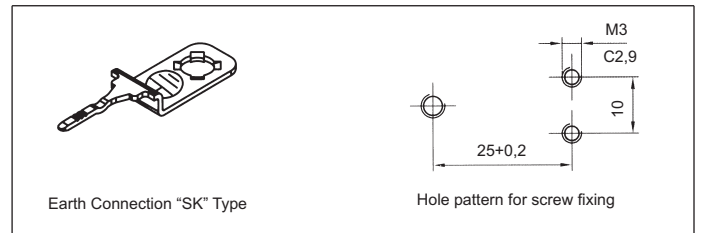
Clamping Springs: Stainless spring steel

Current Rating: to EN 60 598 : 16 A  
to EN 60 998 : 24 A

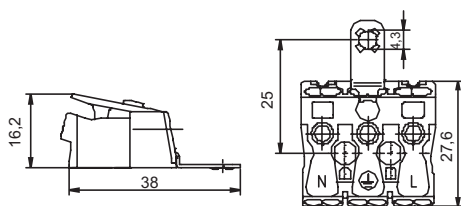
Maximum Ambient Temp.: T 110 °C

Conductor Size: ext.: 2 x 0.5 to 2.5 mm<sup>2</sup>  
int.: 1 x 0.5 to 1.5 + 1 x 0.5 to 2,5  
+ 1 x 0,5 zo 0.75 mm<sup>2</sup> (capacitor)

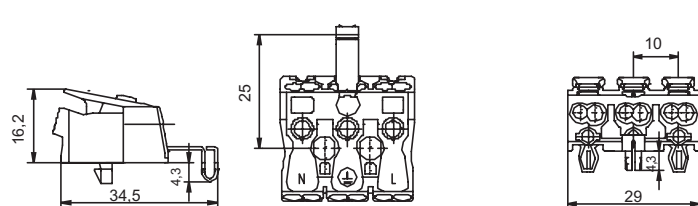
Stripping Length: 0.5 to 1.0 mm<sup>2</sup> : 8 mm  
1.5 to 2.5 mm<sup>2</sup> : 9 mm  
Capacitor 0.5 to 0.75 mm<sup>2</sup> : 9 mm



LK 980-01/ 3 SK B



LK 980-01 RZ/ 3 ST B



Type	LK 980 - 3way without Printing		LK 980 - 3way with Printing N ⊕ L		Kg per 100 Pcs.	Pack. Unit
	List No./ No.of Ways	Order No.	List No./ No.of Ways	Order No.		
Screw fixing without earthing bow	LK 980-01/ 3	04 00 13	LK 980-01/ 3 B	04 10 13	0,75	500
Screw fixing with earthing bow "screw"	LK 980-01/ 3 SK	04 02 13	LK 980-01/ 3 SK B	04 12 13	0,83	500
Screw fixing with earthing bow "push-in"	LK 980-01/ 3 ST	04 03 13	LK 980-01/ 3 ST B	04 13 13	0,85	500
Catch pins without earthing bow	LK 980-01 RZ/ 3	04 40 13	LK 980-01 RZ/ 3 B	04 50 13	0,77	500
Catch pins with earthing bow "screw"	LK 980-01 RZ/ 3 SK	04 42 13	LK 980-01 RZ/ 3 SK B	04 52 13	0,85	500
Catch pins with earthing bow "push-in"	LK 980-01 RZ/ 3 ST	04 43 13	LK 980-01 RZ/ 3 ST B	04 53 13	0,87	500
Catch pins with earthing claw "push-in"			LK 980-01 RZ/ 3 SU B	04 56 13	0,79	500