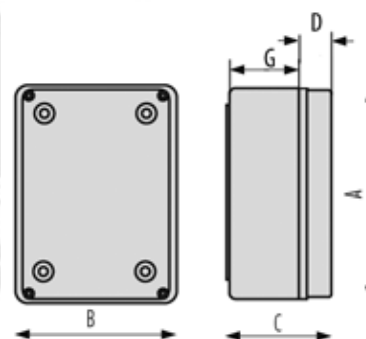
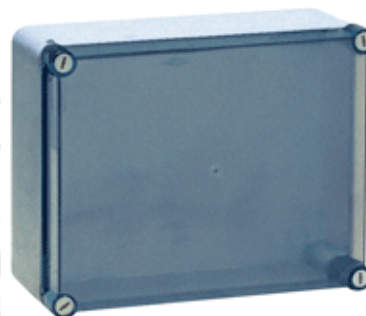


**HIL-BOX® enclosure system  
with smooth walls, nylon-hinged screws**

plain sided shock resistant enclosures with **cover fixed by nylon-screws**. The unscrewing of the nylon screws allows to open the lid in 2 directions depending on the used screws. The screws are used as hinge and allow a fast opening of the enclosure.

protection spec.: IP 65 acc. DIN EN 60529  
 material: base and lid ABS (UV resistant),  
 transparent lid PC, screws PA  
 colour: grey RAL 7035  
 installation temp.: -5°C up to +60°C acc. DIN EN 60670  
 temperature resistance: max. 70°C acc. DIN EN 60695-10-2  
 flame protection: 650°C acc. DIN EN 60695-2-11



Item Number

**55541**

HIL-BOX® enclosure system, cover transparent

A [mm]	460,00
B [mm]	380,00
C [mm]	120,00
G [mm]	80,00
D [mm]	50,00



Hilpress GmbH  
 Grützmühlenweg 40  
 D-22339 Hamburg