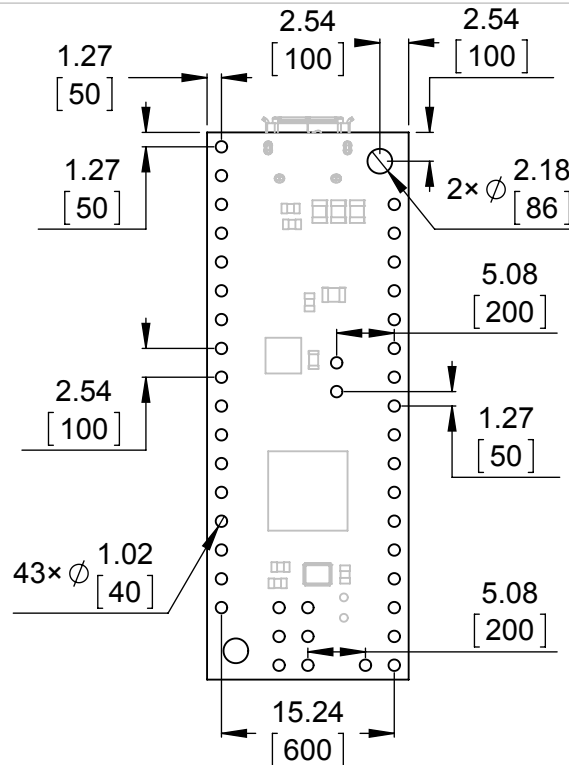
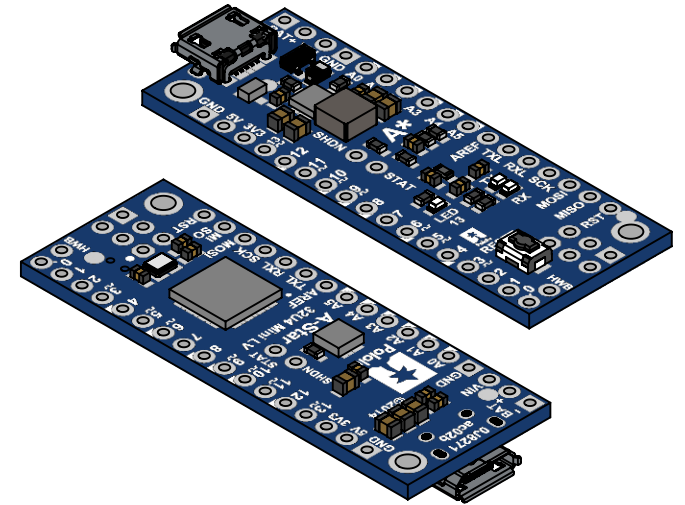


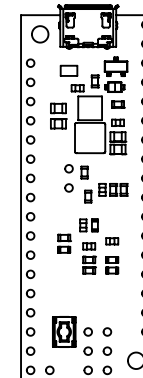
1 Board dimensions (top view)
Scale 3:2



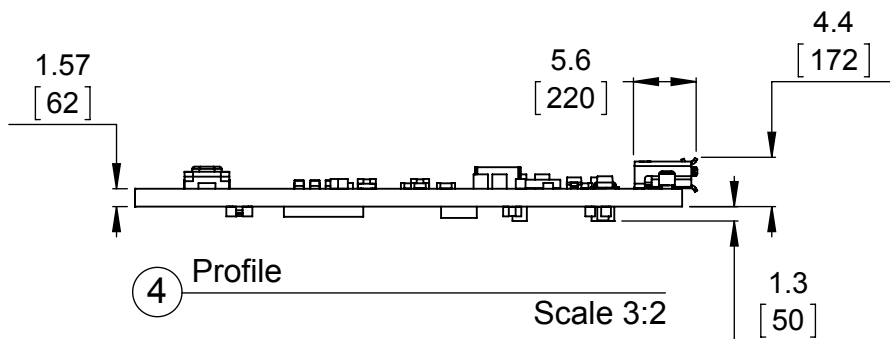
2 Connector callouts (bottom view)
Scale 3:2



3 Isometric view
Scale 3:2



5 Actual size
Scale 1:1



4 Profile
Scale 3:2

1. To get the specified scale, select 100% in print settings.
2. Drill location tolerance: ± 0.1 [± 5].
3. Board edge tolerance: ± 0.3 [± 10].

<http://www.pololu.com/product/3103>

Name: A-Star 32U4 Mini LV	Item number: 3103
Drawing date: 24 July 2014	 Pololu Robotics & Electronics © 2014 Pololu Corporation
Units: mm [mil]	