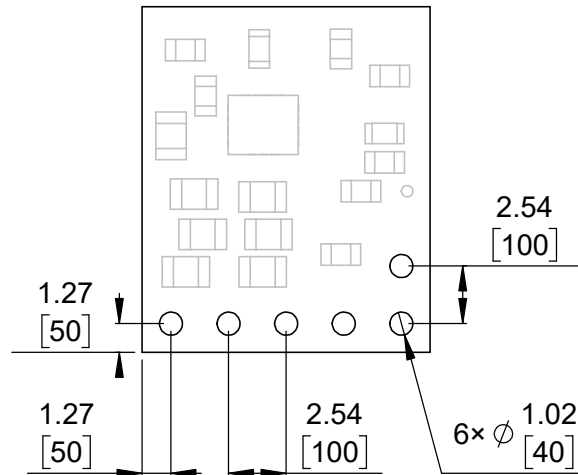
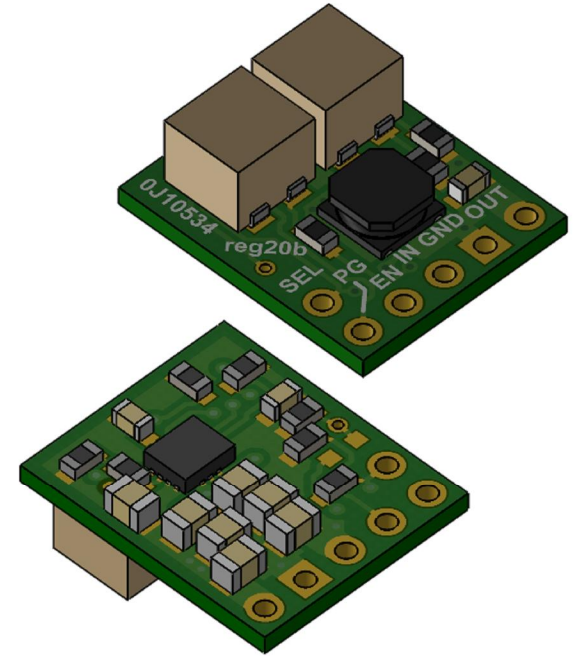


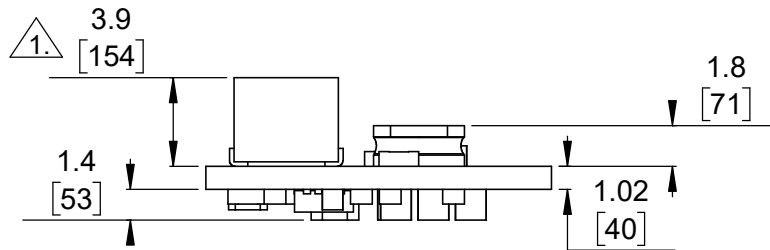
① Board dimensions (top view)
Scale 3:1



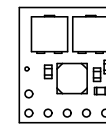
② Connector callouts (bottom view)
Scale 3:1



③ Isometric view
Scale 3:1



④ Profile
Scale 3:1



⑤ Actual size
Scale 1:1

- ①. Some products applicable to this diagram do not include one or both trimmer potentiometers.
 2. Trimmer adjustment slot is 1.5 [60] × 0.6 [22].
 3. To get the specified scale, select 100% in print settings.
 4. Drill location tolerance: ±0.1 [±5].
 5. Board edge tolerance: ±0.3 [±10].

<https://www.pololu.com/product/2868>

Name: Step-Up/Step-Down Voltage Regulator S9V11x		Item number: 2868-2873
Drawing date: 1 December 2017	Dev code: reg20b	 © 2017 Pololu Corporation
Units: mm [mil]	Material: mixed	