

DC to AC Inverters

Connector type, Dimming, 8W, for 2 Bulbs

Conformity to RoHS Directive

CXA Series CXA-P1212B-WJL

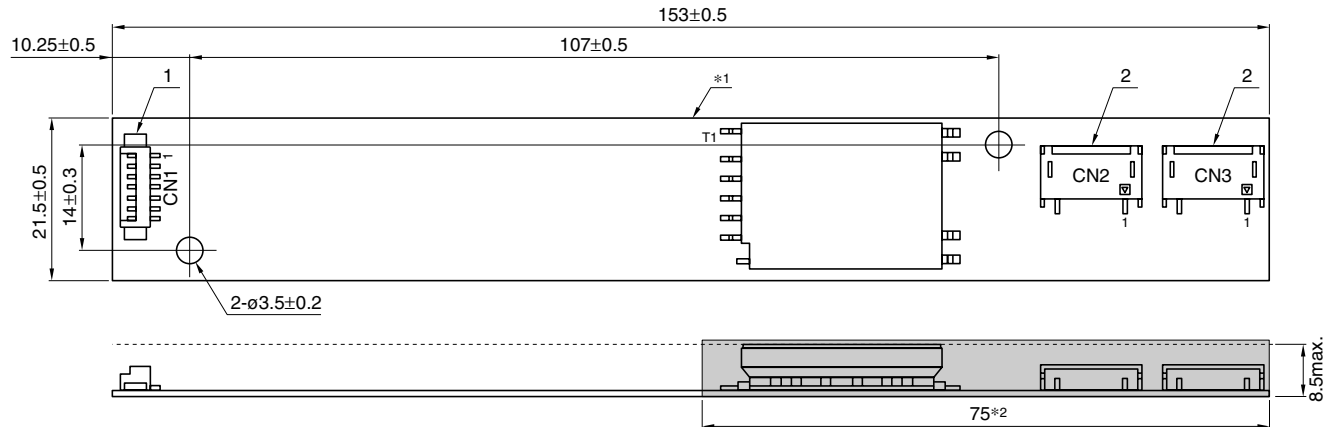
FEATURES

- For 2 bulbs.
- Corresponding to wide operating temperature range.
- Applicable panel size* : 10 to 12-inch
- With brightness control function (Pulse Wide Modulation mode).
- With lamp failure detector.
- The high-voltage terminals and patterns are coated with silicone so as to avoid the defects caused by dust.
- It is a product conforming to RoHS directive.
- * The applicable panel size is for typical reference dimensions.

TEMPERATURE AND HUMIDITY RANGES

Temperature range (°C)	Operating	-10 to +70
	Storage	-30 to +85
Humidity range(%)RH		95max.
		[Maximum wet-bulb temperature 38°C. No dew.]

SHAPES AND DIMENSIONS



*1 Substrate(PWB: Printed wiring board): Flame retardant material UL94V-0(FR-4 or CEM-3) t=1mm

Weight: 21.2g typ.

*2 : High-voltage generator (The entire surface within a range of 75mm away from the end of the base in the output)

Dimensions in mm

	Connector manufacturer's company and type	Symbol
1 Input connector	Molex Japan Co., Ltd. 53261-0771	CN1
2 Output connector	Japan Solderless Terminal Co., Ltd. SM02(8.0)B-BHS-1	CN2, CN3

TERMINAL NUMBERS AND FUNCTIONS

CN1

Terminal No.	Function	Symbol
CN1-1	Input voltage Edc: 10.8 to 13.2V/12V[nom.]	V _{in}
CN1-2	—	—
CN1-3	0V	GND
CN1-4	—	—
CN1-5	Remote voltage Edc 0 to 0.4V: off/2.5 to 13.2V:on	V _{rm} t
CN1-6	Lamp failure detector 0V: Normal condition/5V: Abnormal condition	V _{st}
CN1-7	Brightness dimmer voltage *1 Edc: 0 to 2.5V(Maximum brightness on 0V)	V _{br}
	Brightness dimmer *2VR resistance VR: 0 to 50kΩ (Maximum brightness on 0Ω)	R _{br}

*1 Brightness can be controlled by adjusting V_{br} within a range of 0 to 2.5V.

*2 Brightness can be controlled by adjusting R_{br} within a range of 0 to 50kΩ.

CN2

Terminal No.	Function	Symbol
CN2-1	Output 1[High voltage] I _{rms} 2 to 6mA	V _{HIGH1}
CN2-2	—	N.C.
CN2-3	Output 1[Low voltage] (2V)	V _{LOW1}

CN3

Terminal No.	Function	Symbol
CN3-1	Output 2[High voltage] I _{rms} 2 to 6mA	V _{HIGH2}
CN3-2	—	N.C.
CN3-3	Output 2[Low voltage] (2V)	V _{LOW2}

• Conformity to RoHS Directive: This means that, in conformity with EU Directive 2002/95/EC, lead, cadmium, mercury, hexavalent chromium, and specific bromine-based flame retardants, PBB and PBDE, have not been used, except for exempted applications.

• All specifications are subject to change without notice.

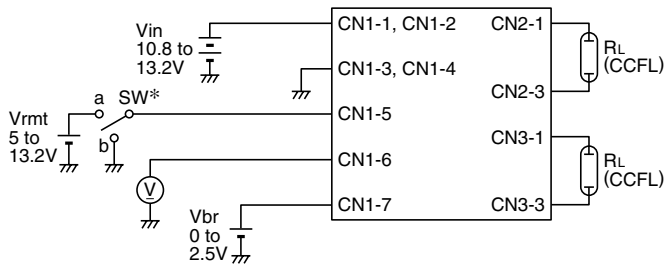
CXA-P1212B-WJL

ELECTRICAL CHARACTERISTICS

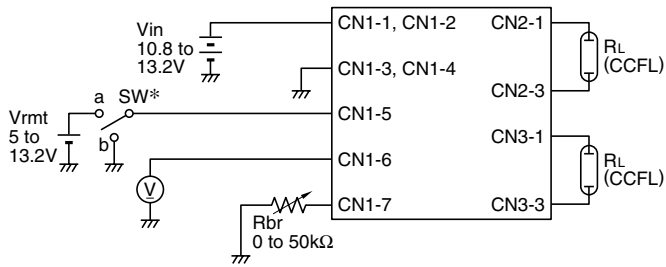
Item	Unit	Symbol	Specification			Condition				Brightness
			min.	typ.	max.	Vin(V)	Vbr(V)/Rbr(kΩ)	Ta(°C)	RL(kΩ)	
Output current I _{rms}	mA	I _{out}	5.3	6.0	6.7	12±1.2	0/0	-10 to +70	85 to 95	Maximum
			5.5	6.0	6.5	12±0.6	0/0	23±5	90	Maximum
			1.1	2.0	2.9	12±1.2	2.5/50	-10 to +70	85 to 95	Minimum
Input current I _{dc}	A	I _{in}	—	0.8	1.0	12±0.6	0/0	-10 to +70	90	Minimum
Oscillation frequency	kHz	FL	35	40	45	12±0.6	0/0	-10 to +70	85 to 95	
Open circuit output voltage E _{rms}	kV	V _{open}	1.5	1.7	—	12±1.2	0/0	-10 to +70	∞	

TYPICAL CONNECTIONS

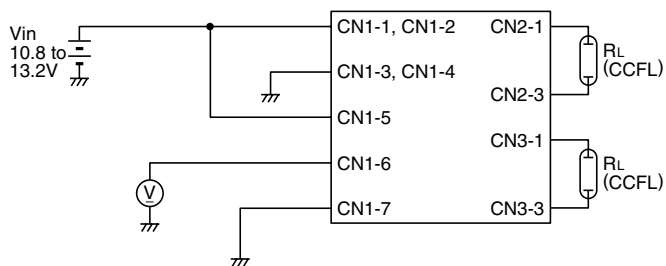
EXAMPLE OF VOLTAGE DIMMER CONTROL



EXAMPLE OF POTENTIOMETER DIMMER CONTROL



NO DIMMER CONTROL (BRIGHTNESS MAX.)



* SW a:on, b:off

BRIGHTNESS DIMMER VOLTAGE- OUTPUT CURRENT CHARACTERISTICS

