

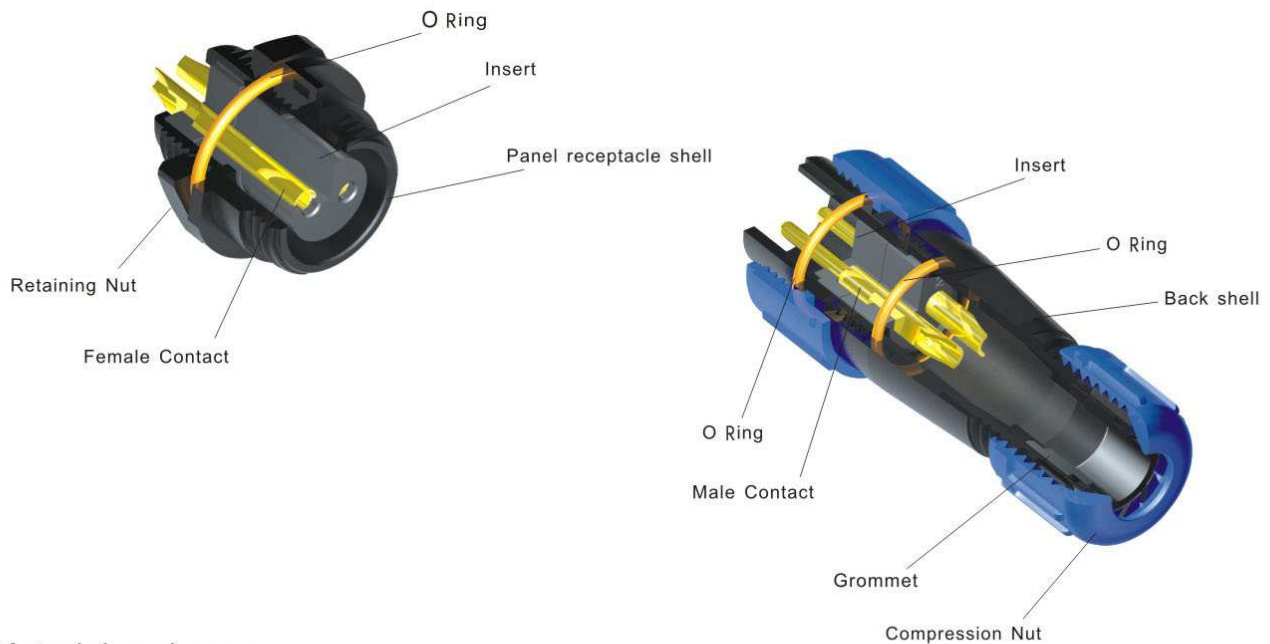
CIRCULAR CONNECTORS SERIES

SP
13、21



IP68 Plastic Connectors with threaded coupling

SP series circular connector meets the requirements of IP68, it works reliably indoor, outdoor and under water harsh environment applications. Patent pending



Material and spec

| | | | |
|---------------------------|-------------------------|--------------------|-------------|
| Back shell | V-0 | Fire resistance | V-0 |
| Insert material | Temperature range 260°C | | |
| Contact material | brass | | |
| Contact plating | gold over nickel | | |
| Contact termination style | solder | | |
| Cable OD range | SP13 Type I 3-6.5mm | SP13 Type II 4-8mm | SP21 6-12mm |
| IP rating | IP68 | | |
| Mating cycle | > minimum 500 times | | |
| Temperature range | -40+85°C | | |
| Humidity | +40°C 95±3% | | |
| Vibration | 10~500Hz | 100m/S | |
| Shock | 40~80/min | 250m/S | |

SP21 Series

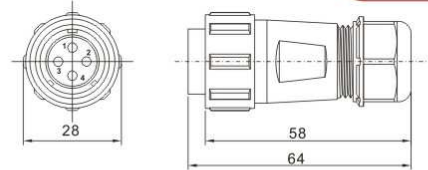
**SP
21**



SP2110/P ❖

SP2110/S ❖

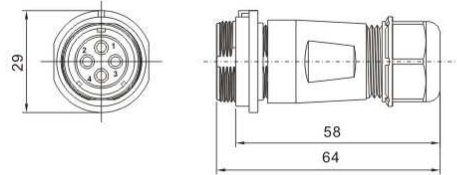
This item mates with
SP2111, SP2112, SP2113
Threaded coupling
Solder termination



SP2111/P ❖

SP2111/S ❖

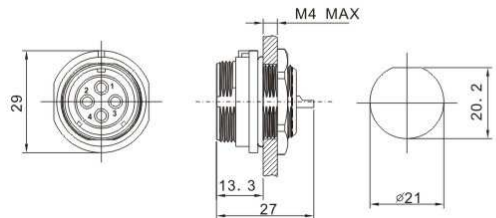
This item mates with
SP2110
Threaded coupling
Solder termination



SP2112/P ❖

SP2112/S ❖

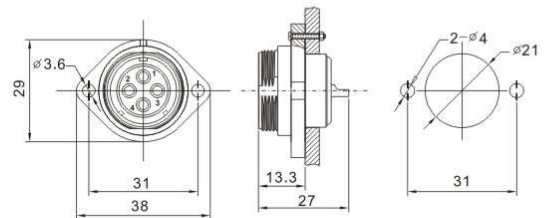
This item mates with
SP2110,
"D" hole with a nut on
the back
Solder termination



SP2113/P ❖

SP2113/S ❖

This item mates with
SP2110,
Install by screws
Solder termination



Insert configuration, face view of female

| Pin Number | 2 | 3 | 4 | 5 | 7 | 9 | 12 |
|--------------------------------|----------|----------|----------|-------|-------|-----------|-----------|
| Insert configuration | | | | | | | |
| | 2pole | 3pole | 4pole | 5pole | 7pole | 9pole | 12pole |
| Rated current A | 30A | 30A | 30A | 15A | 15A | 5A | 5A |
| Size and No. of contact | ∅ 3X2 | ∅ 3X3 | ∅ 3X4 | ∅ 2X5 | ∅ 2X7 | ∅ 1X9 | ∅ 1X12 |
| Rated voltage (A.C. V. rms) | 500V | 500V | 500V | 500V | 500V | 500V | 400V |
| Test voltage (A.C. V) 1min | 1500V | 1500V | 1500V | 1500V | 1500V | 1500V | 1200V |
| Contact resistance mΩ | 1 | 1 | 1 | 2.5 | 2.5 | 5 | 5 |
| Insulation resistance mΩ | 2000 | 2000 | 2000 | 2000 | 2000 | 2000 | 2000 |
| Wire size mm ² /AWG | ≤4.17/11 | ≤4.17/11 | ≤4.17/11 | ≤2/14 | ≤2/14 | ≤0.785/18 | ≤0.785/18 |