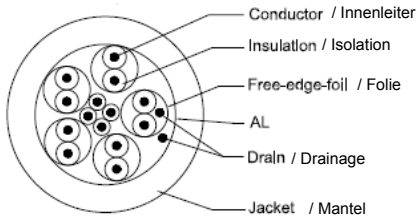
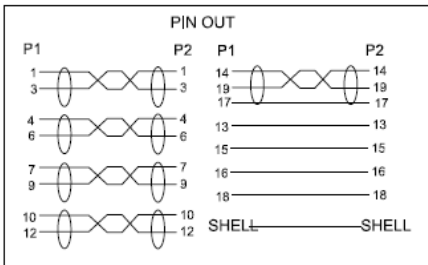


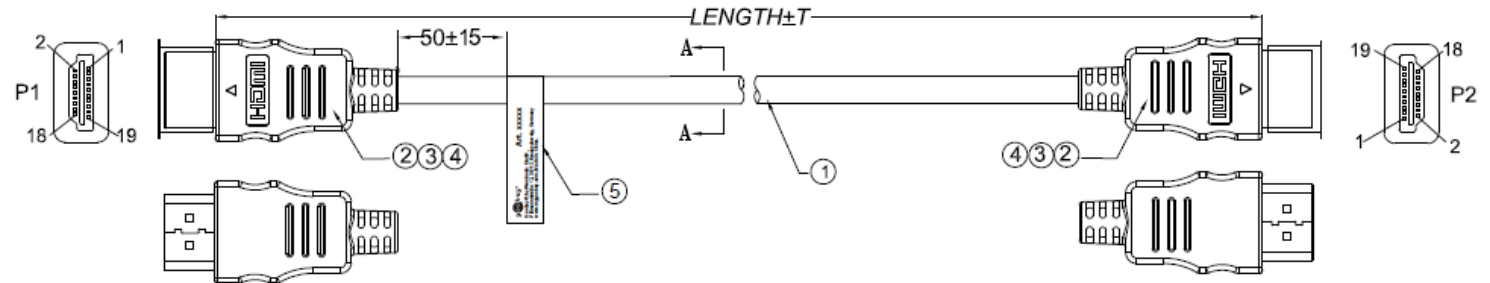
Querschnitt
Cross section



Belegung
Wiring



Zeichnung
Drawing



5	LABLE	Size:80*8.8mm
4	COVER	LD-PE;Transparent
3	MOLDING	PVC 45P;BLACK
2	CONN	HDMI A TYPE MALE,INSULATION BLACK,GOLD PLATED SHELL
1	CABLE	[30AWG(1/0.254CCS)*1P+Free-edge-foil]*4C+[30AWG(1/0.254CCS)*1P+D(1/0.254CCS)+Al+Mylar]*1C +30AWG(1/0.254CCS)*4C+D(1/0.254CCS)+AL;OD:5.5±0.2mm,COLOR:BLACK,PVC JACKET
NO.	ITEM	DESCRIPTION



P/NO	Length
51818	1000
51819	1500
51859	1800
51820	2000
51827	2500
51821	3000


HiSpeed HDMI-Kabel

- Anschlüsse: HDMI-Stecker > HDMI-Stecker
- Kontakte: 19 PIN; vergoldet
- Standards: HDTV bis 2160p (4K) @ 30 Hz, 3D bis 1080p (Full HD)
- Kabel: UL AWM STYLE 20276 80°C 30V VW-1 30 AWG CCS
- Isolationswiderstand: DC 300 V 10 MOhm
- Kontaktwiderstand: 5 Ohm
- Konformität: RoHS

HiSpeed HDMI cable

- Connectors: HDMI plug > HDMI plug
- Contacts: 19 PIN; gold-plated
- Standards: HDTV up to 2160p (4K) @ 30 Hz, 3D up to 1080p (Full HD)
- Cable: UL AWM STYLE 20276 80°C 30V VW-1 30 AWG CCS
- Insulation resistance: DC 300 V 10 MOhm
- Contact resistance: 5 Ohm
- Conformity: RoHS

Änderungen

Datum	Name	gez.:	Datum	Name	Bezeichnung	Blatt
		gez.:	06.03.2020	nw	High-Speed-HDMI™ Ethernet 	
		gepr.:	06.03.2020	nw		
		Norm:			Zeichnungs-Nr.:	von
			Änderungen vorbehalten / Subject to change			

High-Speed-HDMI™ Ethernet



51818, 51819, 52959, 51820, 51827, 51821